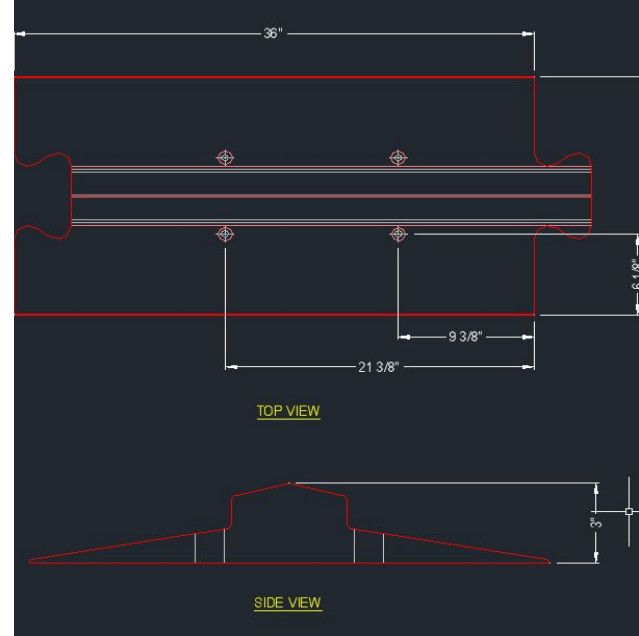

SITE DESIGN DETAIL AND PHOTO DICTIONARY

ABDUL KHAN, MORDECHAI KATZ, JOSEPH LAMBERT, RAYON WALCOTT

DETAIL 1: BERM



Profile view of RubberForm Spill Containment Berm
<https://rubberform.com/products/spill-containment-berm-3h-x-8w-x-36l/>

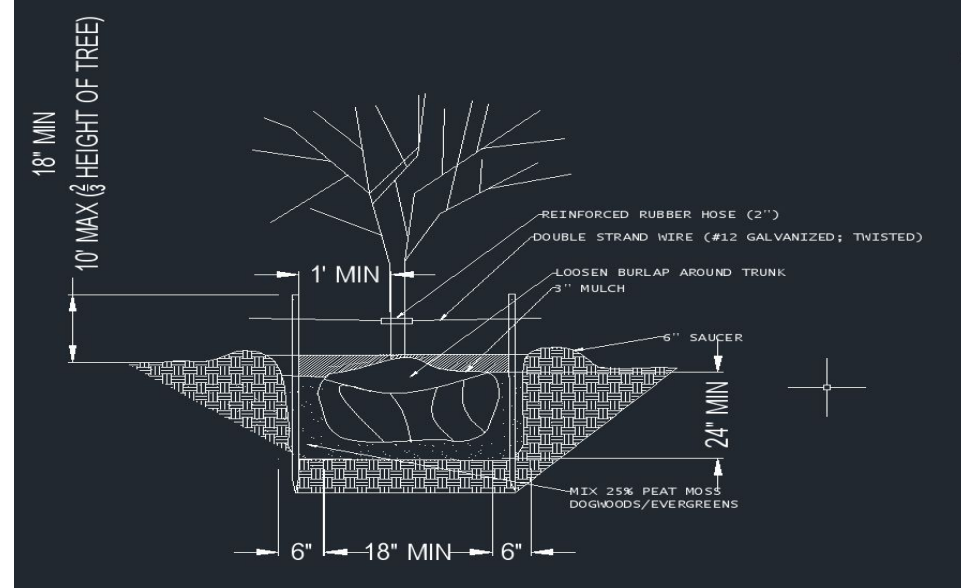


Detail view of RubberForm Spill Containment Berm

DETAIL 2: DECIDUOUS TREE/DRIP LINE

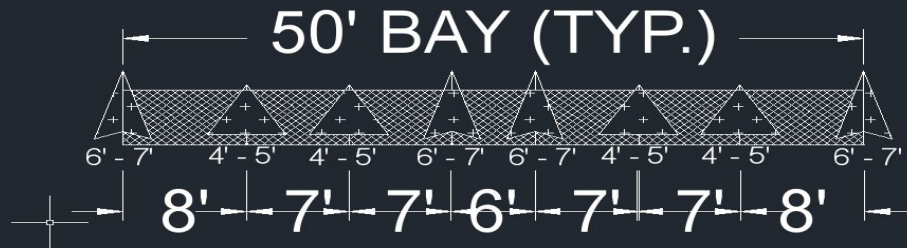
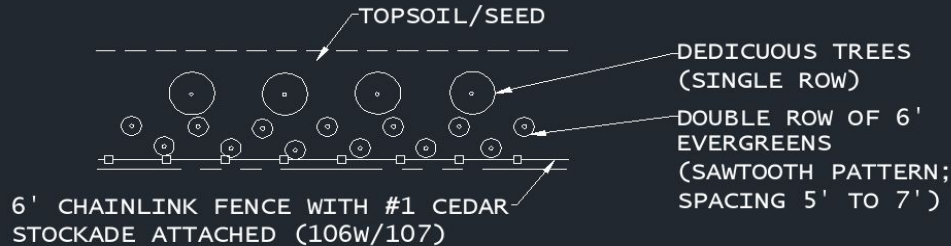


Deciduous Tree Profile (from Differences between Deciduous and Coniferous Trees)
<https://homeguides.sfgate.com/difference-between-deciduous-coniferous-72832.html>



Deciduous Tree/Drip Line Detail (Land Development Regulations)

DETAIL 3: BUFFER PLAN & SECTION

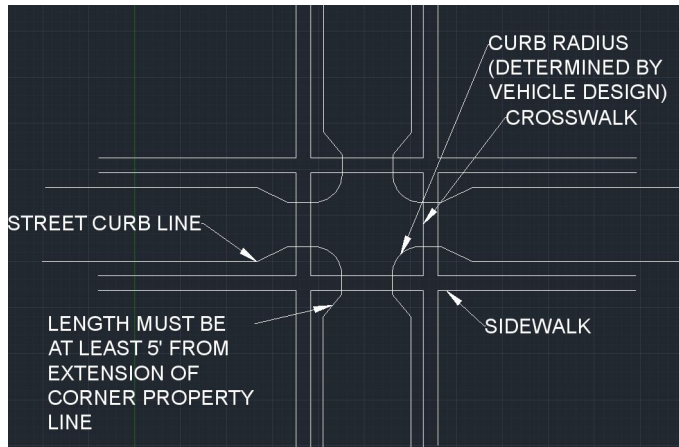


Landscaping for privacy: Buffers, barriers, and screens

<https://www.timberpress.com/blog/2013/01/buffers-barriers-and-screens-landscaping-for-privacy-in-pictures/>

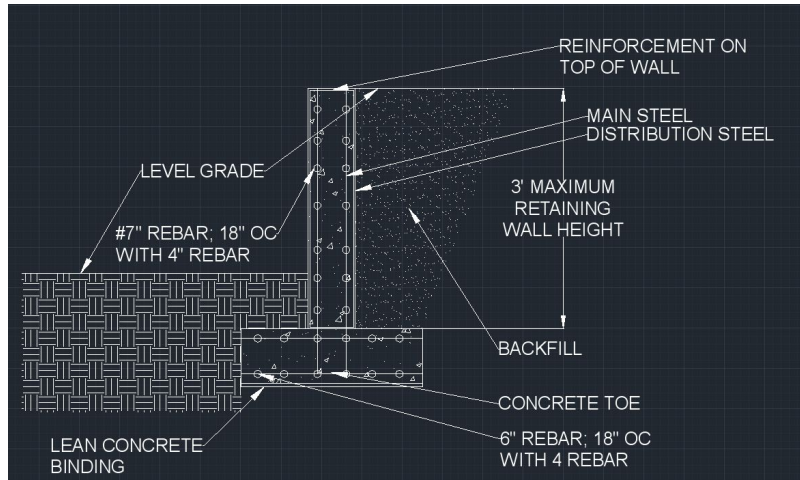
Image at top right courtesy Joshua McCullough (<http://phytophoto.com/>)

DETAIL 4: BULB-OUT PLAN



Bulb-out image from FHWA's Innovative Intersection Safety Improvement Strategies and Management Practices: A Domestic Scan (West Palm Beach, Florida)
https://safety.fhwa.dot.gov/intersection/other_topics/fhwas06016/chap_6.htm

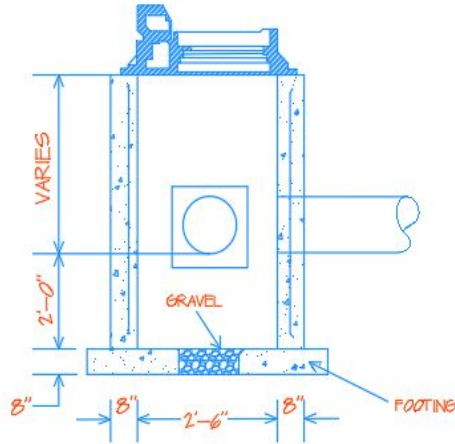
DETAIL 5: REINFORCED CONCRETE RETAINING WALL



Example of construction of a reinforced concrete retaining wall:
<http://hazeldenehouse.com/reinforced-concrete-retaining-wall/>
Photo courtesy Graham Care Group (United Kingdom)

DETAIL 6: CATCH BASIN

RAYON WALCOTT



CATCH BASIN SECTION
VIEW

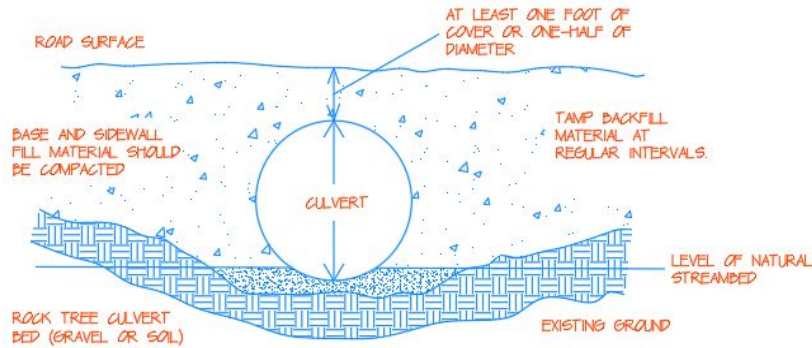


<https://www1.nyc.gov/nyc-resources/service/1338/catch-basin-complaint>

This is a cistern designed to collect & remove pollutants in stormwater runoff before it enters the stormwater collection system.

DETAIL 7: CULVERT

RAYON WALCOTT



CULVERT SECTION VIEW

(N.T.S)

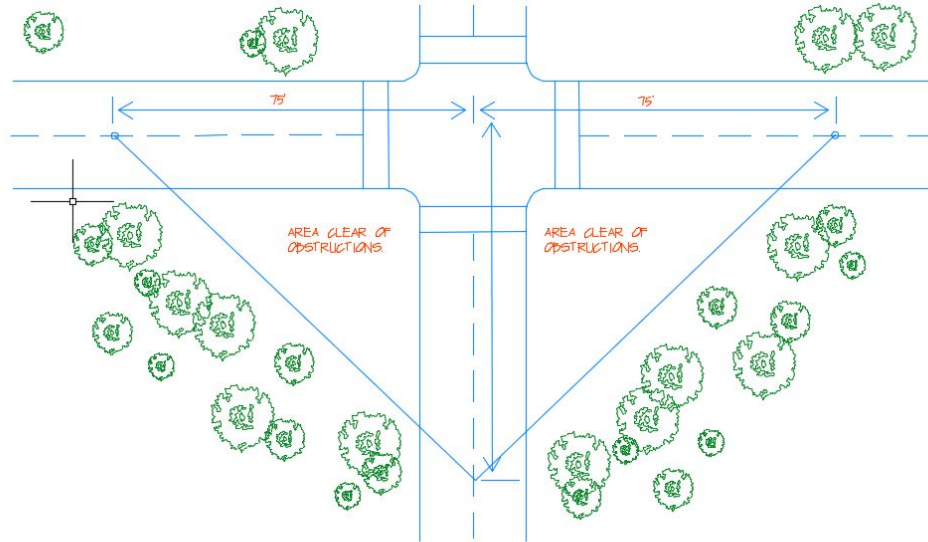


<https://www.co.ozaukee.wi.us/2101/Culvert-Design>

These are tunnel structures constructed under roadways, embankments or railways to provide cross drainage.

DETAIL 8: SITE TRIANGLE

RAYON WALCOTT



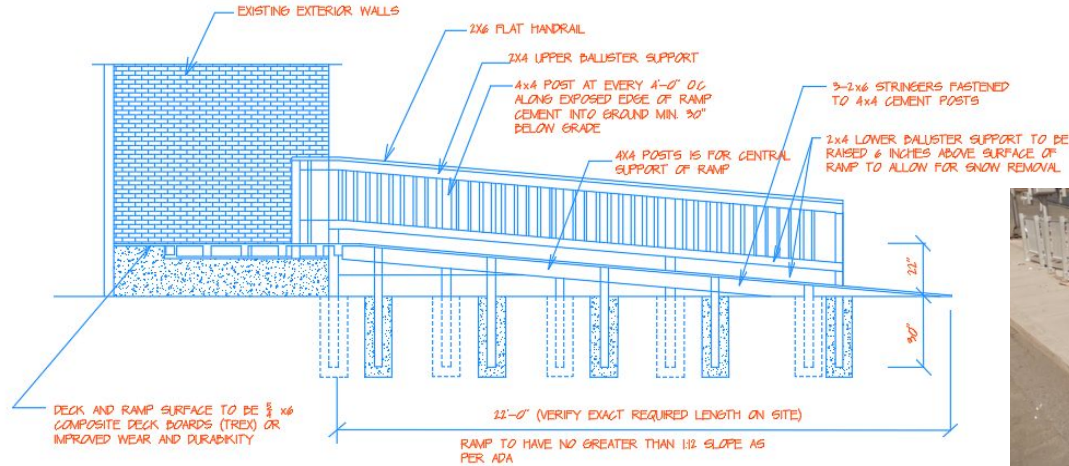
PLAN (SIGHT TRIANGLE)
N.T.S

<http://www.mikeontraffic.com/sight-distance-explained/>

Sight triangles are areas at the corners of intersections of roads where views of the approaching traffic are unobstructed.

DETAIL 9: CONCRETE ACCESSIBLE RAMP

RAYON WALCOTT



CONCRETE ACCESSIBLE RAMP DETAIL (N.T.S)

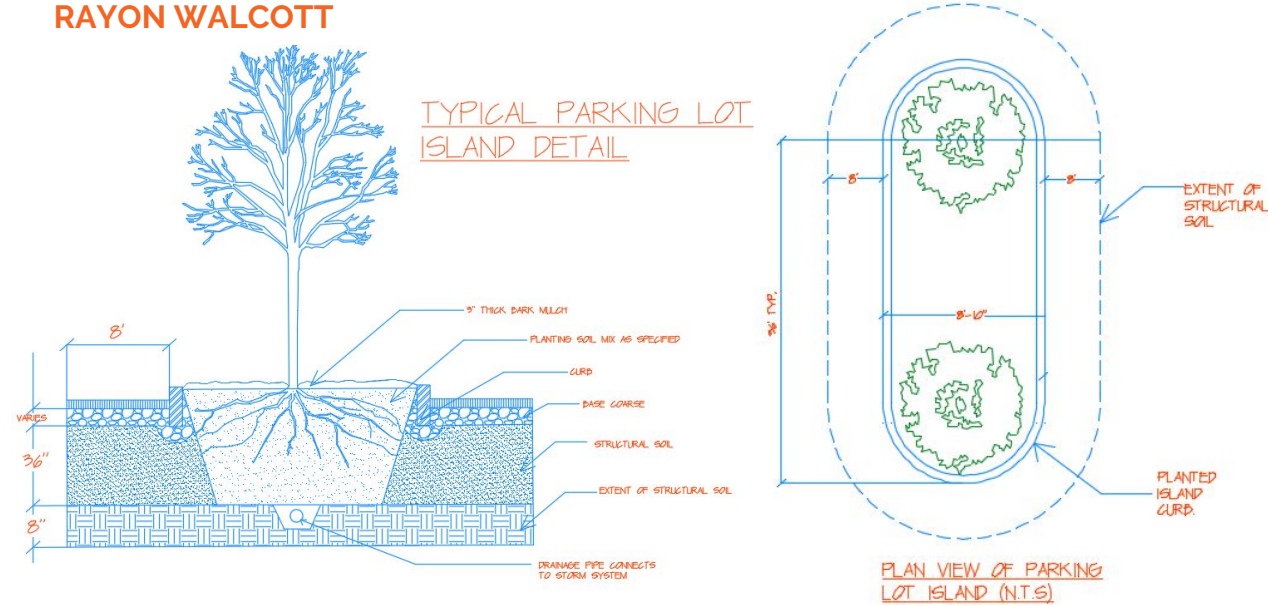
180 Atlantic Ave, Farmingdale
NY



Accessible ramps are inclined planes designed to have a maximum slope of 1:12 in order to match the physical abilities of wheelchair users.

DETAIL 10: TYPICAL PLANTED PARKING LOT ISLAND

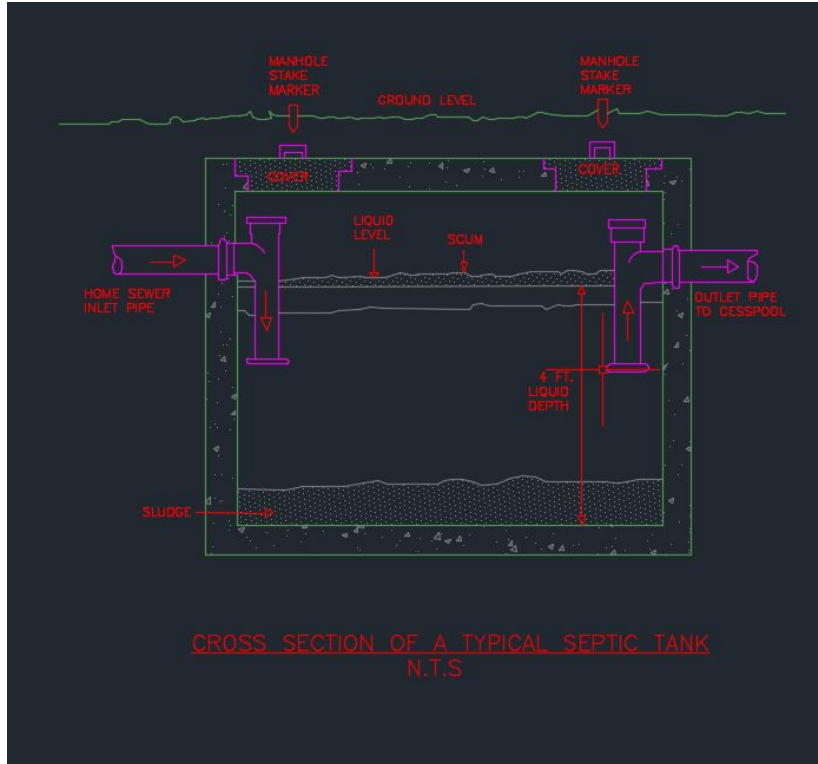
RAYON WALCOTT



<https://hort.ifas.ufl.edu/woody/urban-parking-islands2.shtml>

Planted parking lot islands are used to add beauty and interest to the hardscape as well as to separate parking bays to create continuous vehicular circulation throughout a parking lot.

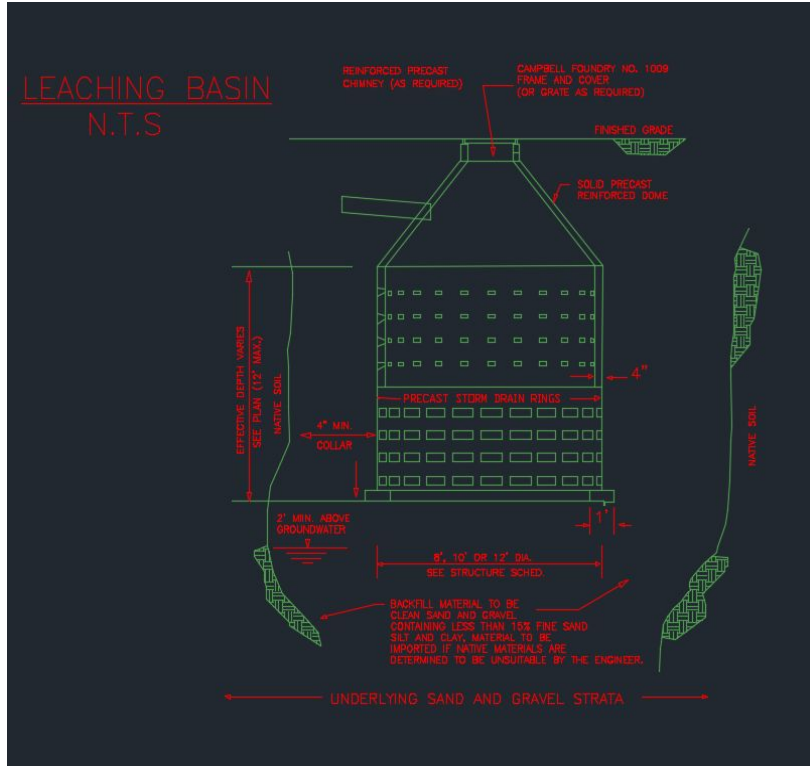
DETAIL 11: Septic Tank Abdul Khan



<https://norbilldisposal.com/septic-tanks-perkasie-pa.html>

- A septic tank system is a watertight box with an inlet and outlet pipe. Wastewater flows from the home to the septic tank through the sewer pipe

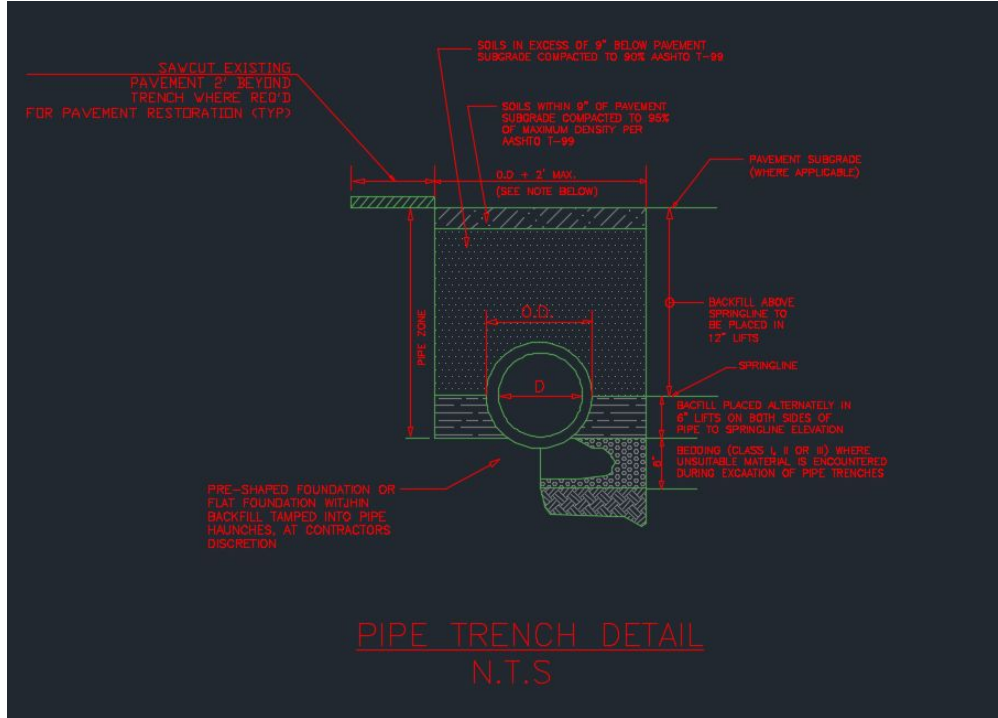
Detail 12: Dry Well/Leaching Abdul Khan



<https://riverheadlocal.com/2016/08/01/county-approves-sanitary-code-change-advanced-individual-septic-systems/>

- Leaching pools are pits that are placed in concrete walls. Wastewater flows into the cesspool and drains into the soil through perforated walls.

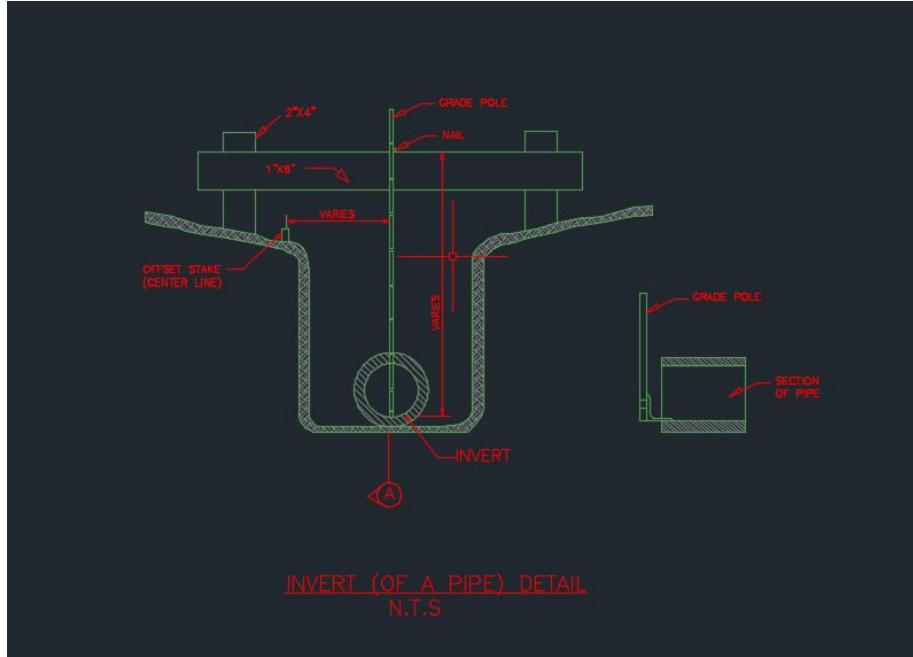
Detail 13: Trench Drain Abdul Khan



[http://trenchdrainmaterials.com/old-site/comm
ercial-trench-drain/](http://trenchdrainmaterials.com/old-site/commercial-trench-drain/)

- A trench drain catches water to bring to subsurface from a specific area or driveway

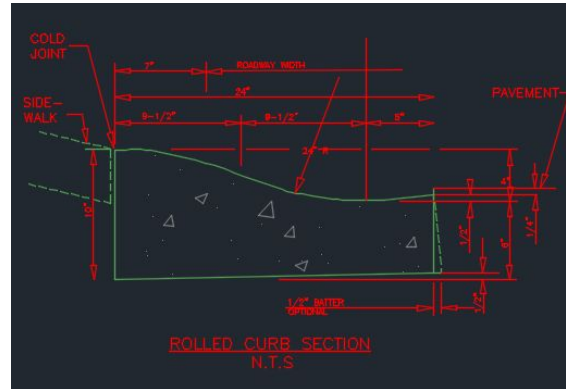
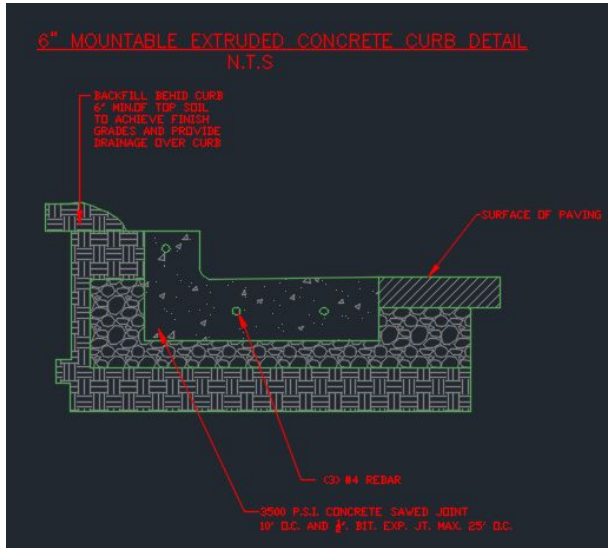
Detail 14: Invert Abdul Khan



<https://www.quora.com/What-is-pipe-invert-elevation>

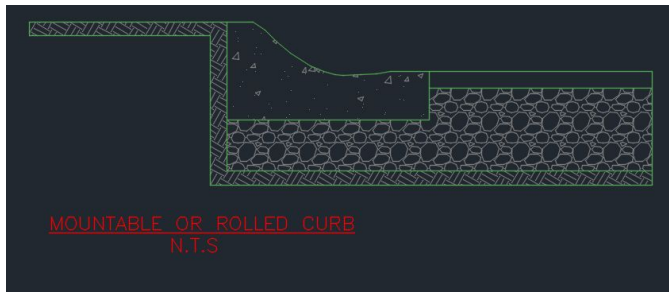
- An invert is the bottom of the pipe, it is used to determine the changes in elevation of the fluid flowing inside of a pipe.

Detail 15: Mountable/Rolled Curb Abdul Khan



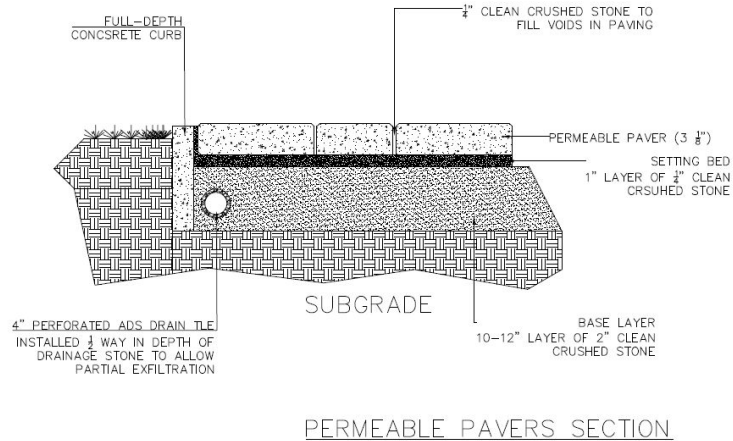
<https://nacto.org/publication/transit-street-design-guide/transit-lanes-transitways/lane-elements/separation-elements/>

- A mountable curb has a sloping face that can be easily be climbed by a moving vehicle.



PERMEABLE PAVERS

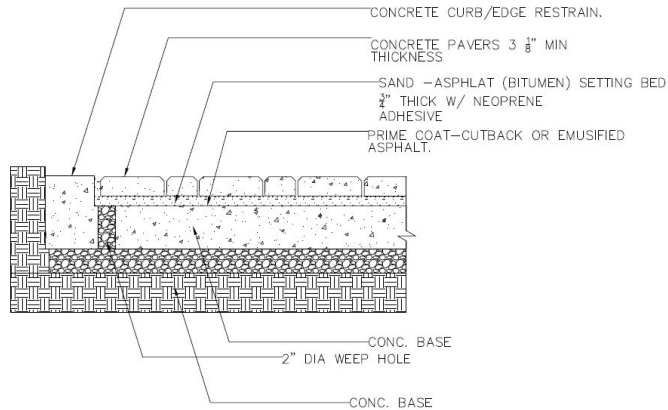
Mordechai Katz



<http://www.yorkbuilding.com/cornerstone-100-project-shrewsbury-commons-2/10566/>

CONCRETE PAVERS ON CONCRETE BASE FOR PEDESTRIANS AND VEHICLES

Mordechai Katz



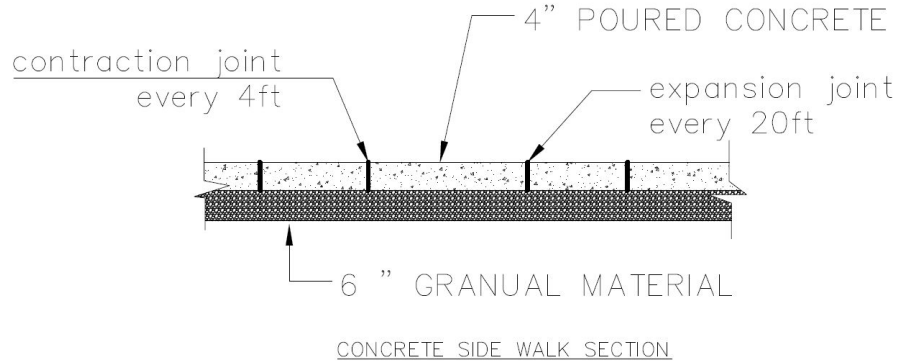
CONCRETE PAVERS ON CONCRETE BASE
FOR PEDESTRIANS AND VEHICLES



<http://www.archiexpo.com/prod/urbastyle/product-87178-1178455.html>

CONCRETE SIDEWALK

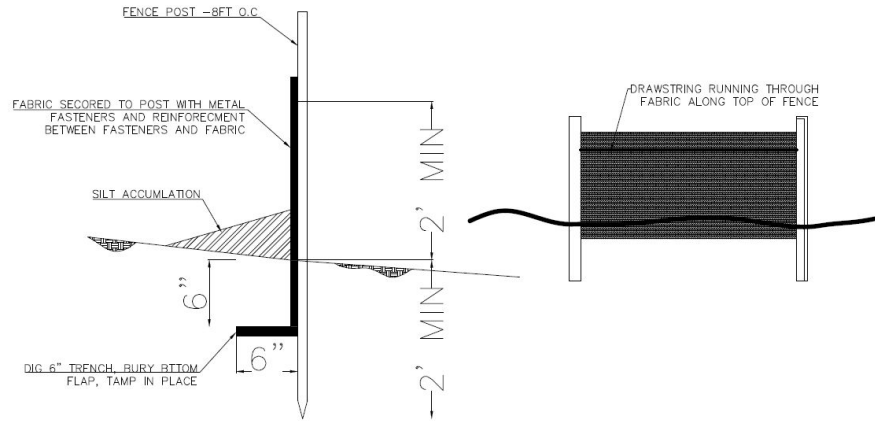
Mordechai Katz



<https://www.reservestudy.com/concrete-sidewalks/>

SILT FENCE

Mordechai Katz



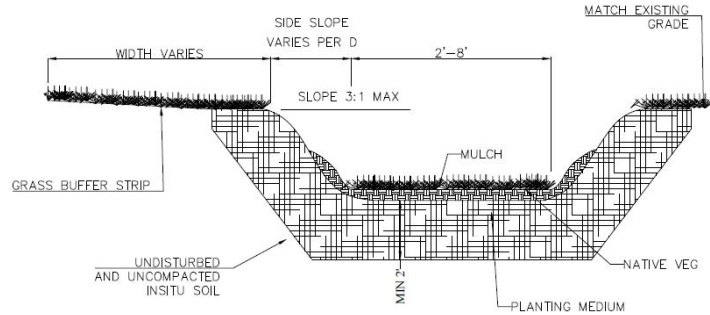
SILT FENCE SECTION



<https://www.btl liners.com/product/pocketed-unsupported-sediment-silt-fence/>

VEGETATED SWALE

Mordechai Katz



VEGETATED SWALE



<https://mukilteo.gov/departments/public-works/surface-water/programs-and-planning/watershed-based-stormwater-strategies-plan/Flid-projects-in-mukilteo/F&psig=AOvVaw1qg3RhUrTMnNPBEd0O5o0A&ust=1542405188426168>
