

Architectural
Design V

PROJECT 2

Downtown Corner Site Precedent Project

Rayon Walcott
ARC 486-Fall 2020
Professor LoPiccolo

BUILDING ONE

Site related

The Church of
Light



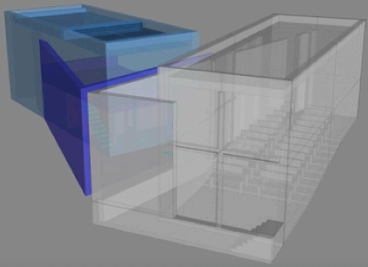
Tadao Ando (Architect)

Country: Japan

Location: Ibaraki, Osaka

Built in 1989

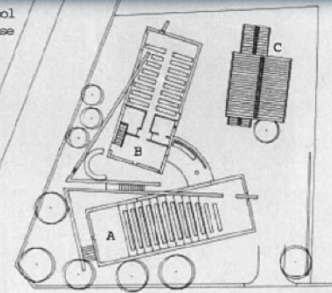
Architectural Features



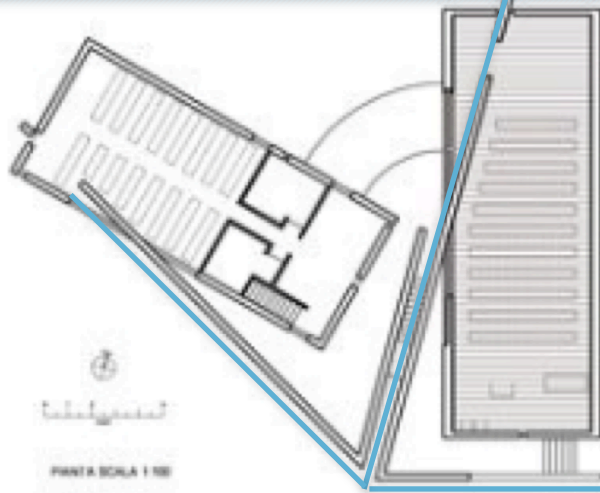
3D Model



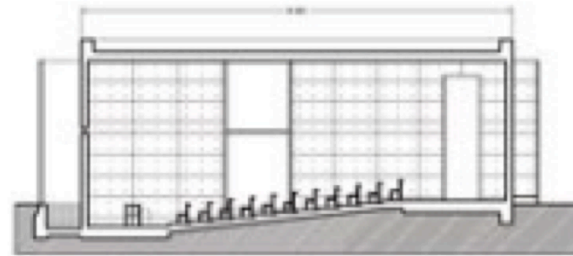
A. Main Chapel
B. Sunday School
C. Minister House



Corner Lot

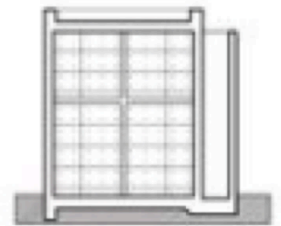


Angled Walls used as a Datum



SEZIONE LONGITUDINALE

Building Sections



SEZIONE TRASVERSALE

Structural System: Reinforced Concrete



Perforated holes
in concrete
block volume.



The reinforced concrete volume is void of any ornament which is not a modern feature.



Citi-Bank located
across the street
from our site.

CONTEXTUAL FEATURES

BUILDING TWO

Site related

Lawrence Public
Library

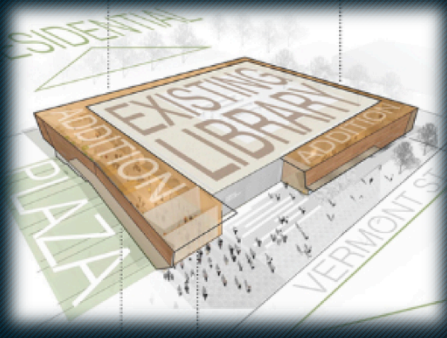


Gould Evans (Architect)

Country: United States

Location: Lawrence, Kansas

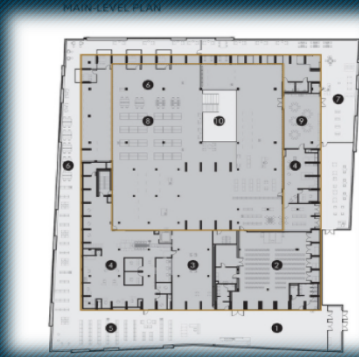
Built in 1972 and modified in 2014



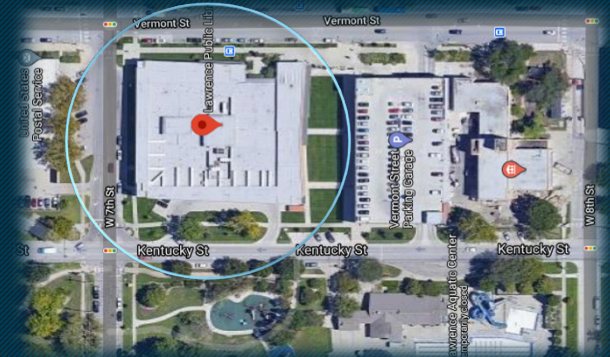
3D Model

Architectural Features

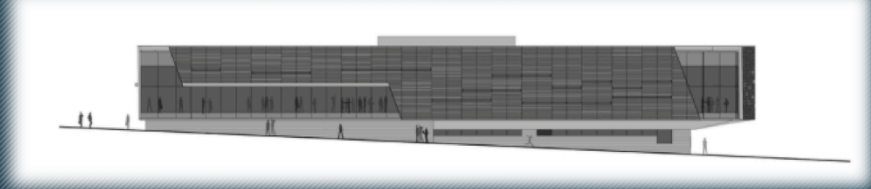
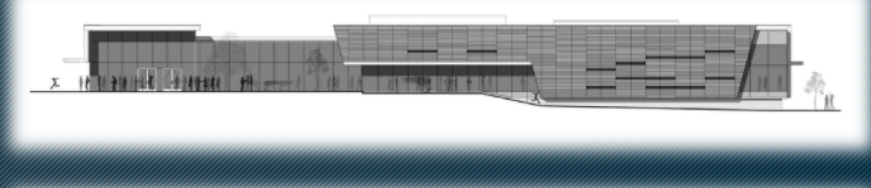
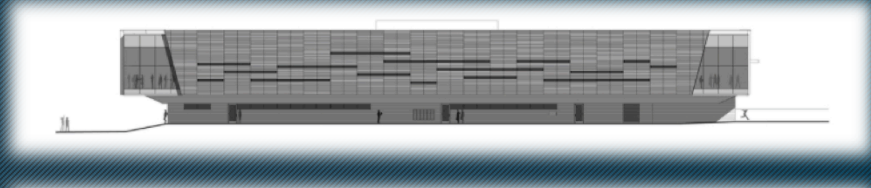
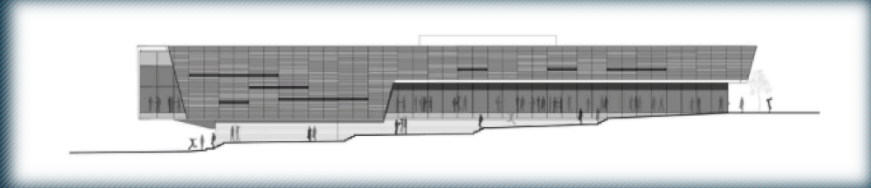
Break in façade provides exposure to light where necessary.



Floor Plan



Corner Lot



Building Elevations

Structural System: Reinforced Concrete



Terracotta cladding wall panel.



Terracotta can be used as a substitute for brick to harmonize with the neighboring buildings on site while demonstrating a modern application.

The Building is glazed at the South-West corner.

Adjoining buildings are made from brick.



CONTEXTUAL FEATURES

BUILDING THREE

Use related

Bay Lofts Apartment



JLA Architects

Country: United States
Location: Sturgeon Bay,
Wisconsin
Built in 2017



3D Unfurnished



3D Furnished

Floor Plan Observation



Unit 204
layout

Mixed-Use
Building

Multi-family

Retail and
restaurant

Common
area



Floor Plan Arrangement

Structural System: Reinforced Concrete with cladding systems.



Horizontal standing seam wall siding signifies apartment floors.

The material variation on the building façade gives a visual interpretation of the interior spaces with regards to use.

Exterior Brick used on the first floor to identify the business areas of the multi-use dwelling.



Combine facades

CONTEXTUAL FEATURES

Sources

The Church Of Light: <https://www.archute.com/church-of-the-light/>

Lawrence Public Library: https://www.architectmagazine.com/project-gallery/lawrence-public-library_o

The Bay lofts Apartment: <https://doorcountypulse.com/the-bay-lofts-hoping-to-be-a-part-of-sturgeon-bays-renaissance/>